



The concrete fronts are available in natural grey only. The integration of a dishwasher is possible. Other materials are offered individually on request.

To architects, planners and retailers we offer the possibility to either purchase the complete **dade MILANO** from dade or a specialist dealer, or to purchase only the raw products (countertop with sink/dade FRONT as raw plate or boxed, drilled and coated) from dade-design and then integrate them into a custom kitchen.

## Product features

- The following drawer types are available: Blum Legrabox (standard), Blum Legrabox with concrete sides, solid wood drawers. A servo drive (automatic opening and closing) is available for all types of drawer.
- Materialization of the corpus: Nut veneer or MDF black (other materials on request).
- The surface appearance is subject to natural variation. Small pores and shrinking cracks, streaking, tiny cavities and colour deviations are no reason for complaint but belong – like knotholes and annual rings in wood – to the unique appearance of the material. Every concrete piece is unique.

## Technical data

Dimensions: 2400 x 1000mm

Thickness fronts: 10mm (+/- 1,5mm)

Thickness Worktop: 35mm, folded out to 15mm

Mass kitchen total: approx. 700kg

dade  
design

concrete works

HEADQUARTERS  
dade design AG  
Bafflesstrasse 37b  
9450 Altstätten, Switzerland  
+41 71 511 26 72

EU BRANCH  
dade design concrete works GmbH  
Im Schlatt 28  
6973 Höchst, Austria  
+43 720 512 245

info@dade-design.com  
www.dade-design.com

swiss made

# CONCRETE KITCHEN

dade MILANO

Salone  
del Mobile  
Milano





## A concrete kitchen for the SALONE – dade-design in Milan

**dade MILANO** is the first jointly developed kitchen by dade-design and Timberline. It will premiere in April 2018 at the Salone del Mobile in Milan. The body with noble nut veneer gets its characteristic appearance with the extra-thin concrete fronts.



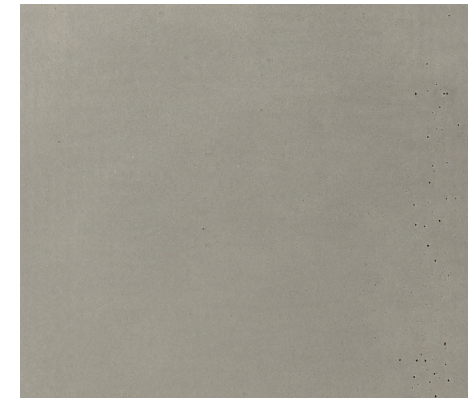
The kitchen block gives the impression of being crafted from a single block of concrete. Its design yields from the collaborative work of the dade architects. The straight-lined kitchen adapts perfectly to different living situations – as a mono-block in modern environments – or, as a complement to a kitchenette.

In addition to the extra-thin concrete fronts, the dade plant in Switzerland also produced the 35mm thick worktop with seamlessly integrated concrete washbasin.

The concrete surfaces were all provided with the special dade coating, making the kitchen suitable for everyday use. Matching the body, the cutting board made of walnut is a perfect complement and eye-catcher at the same time.

## Domestic equipment

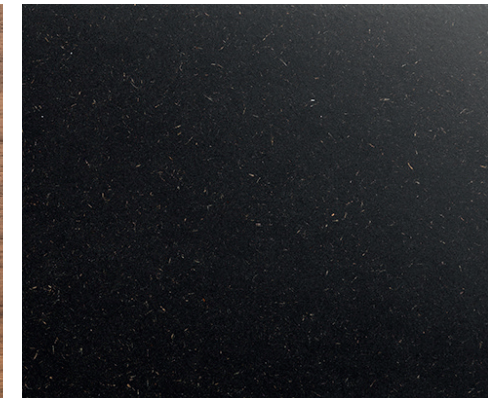
Each kitchen can be individually equipped. The present model is equipped with special features such as the BORA Professional hob, the BLUM LEGRABOX with concrete drawers and an LED system. Walnut veneer, MDF in black or concrete are used as standard materials for the body.



Concrete



Walnut veneer



MDF in black

The matching fittings for the sink come from FRANKE. The drawers with servo drive open almost automatically thanks to Tip-on Blue Motion.

The dade MILANO can be planned individually.

